

PHILIPS

ThermoProtect
straightener

StraightCare
Essential

ThermoProtect technology
Keratin-infused plates
2 temperature settings



BHS375/00



Smooth and shiny hair with care

Specially designed for easy and fast styling with long Keratin-infused plates and 2 temperature settings. Care for your hair with ThermoProtect technology preventing overheating.

Beautifully styled hair

- Temperature range up to 220°C

Care for your hair

- ThermoProtect technology
- Keratin ceramic plates for smooth gliding and shiny hair

Ease of use

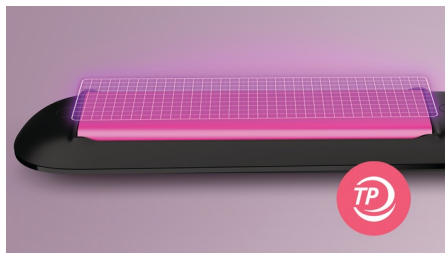
- 2 temperature settings
- 100 mm long plates for fast and easy straightening
- Fast heat-up time, ready to use in 60 sec
- Key-lock function for safe and easy storage
- Universal voltage for worldwide use



asimpleswitch.com

Highlights

ThermoProtect technology



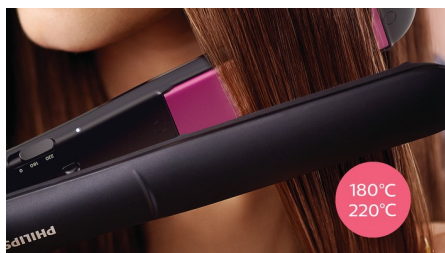
ThermoProtect technology distributes heat evenly across the plates, preventing overheating to protect your hair.

Keratin ceramic plates



Keratin-infused ceramic plates glide smoothly through your hair, for quick and easy styling.

Temperature range



Temperature range up to 220°C to secure long-lasting results while minimising the risk of hair damage.

2 temperature settings



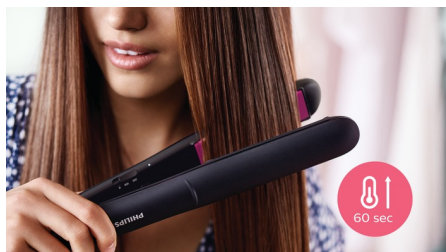
2 temperature settings. Lower temperature for last-minute touch-ups and gentle styling. Higher temperature for long-lasting results.

100 mm long plates



The longer 100 mm plates enable better contact with the hair to help you achieve perfect straightening results more easily and in less time.

Fast heat-up time



The straightener heats up quickly and is ready to use in 60 seconds.

Key-lock function



The plates can be locked together for safe and easy storage.

Universal voltage



Compatible with 110–240 volts. Can be used wherever you travel in the world.



[asimpleswitch.com](https://www.asimpleswitch.com)

Philips Green Logo

Philips Green Products can reduce costs, energy consumption and CO2 emissions. How? They offer a significant environmental improvement in one or more of the Philips Green Focal Areas — Energy efficiency, Packaging, Hazardous substances, Weight, Recycling and disposal and Lifetime reliability.

Specifications

Technical specifications

Styling temperature: 180°C / 220°C

Type of temperature control: Switch

Long plates: 28 x 100 mm

Heat-up time: 60 sec

Voltage: 110-240 V

Cord length: 1.8 m

Features

Material plates: Keratin-infused ceramic plates

Storage hook

Swivel cord

Plate lock

Service

2-year worldwide guarantee

